



New High School #6

Killeen Independent School District \ \ Killeen, Texas

Final Design Package

June 30, 2020



ACKNOWLEDGMENTS

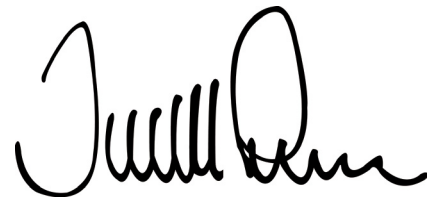
Board of Trustees

Mr. Corbett Lawler President
Ms. Minerva Trujillo..... Vice President
Ms. Susan Jones Secretary
Ms. Shelley Wells Board Member
Ms. JoAnn Purser Board Member
Mr. Marvin Rainwater..... Board Member

ACKNOWLEDGMENTS

The PBK Team wishes to express our sincere appreciation to the Board of Trustees and the Killeen ISD Administration and Staff for allowing us the opportunity to be involved in the design and construction of the New High School #6 for the Killeen Independent School District.

We also extend our utmost gratitude to the individuals who have attended numerous meetings and provided vital information during the design process. Their input and assistance has been most valuable to the success of this very important project.



*Darrell Pearson, LEED AP BD+C
Partner*



*James Fauver, Architect, NCARB
Associate Principal,
Senior Project Manager*



*Daniel De La Garza, LEED AP BD+C
Associate Principal, Senior Designer*



*Richard Chi, LEED AP BD+C
Partner*

Project Overview

1

Site / Floor Plans

2

Design Images

3

Program & Schedule

4



TABLE OF CONTENTS

PROJECT OVERVIEW



Project Overview

On Wednesday, July 11, 2018 & Thursday, July 12th PBK Architects, administrators, and principals joined together for the Killeen High School renovation and New High School #6 programming kick-off meeting. Overall goals and program were discussed at this 2 day initial meeting.

Design Charrette

The process to develop the design for the new High School #6 began by engaging key stakeholders in a three day design charrette.

Charrette [shuh-ret]

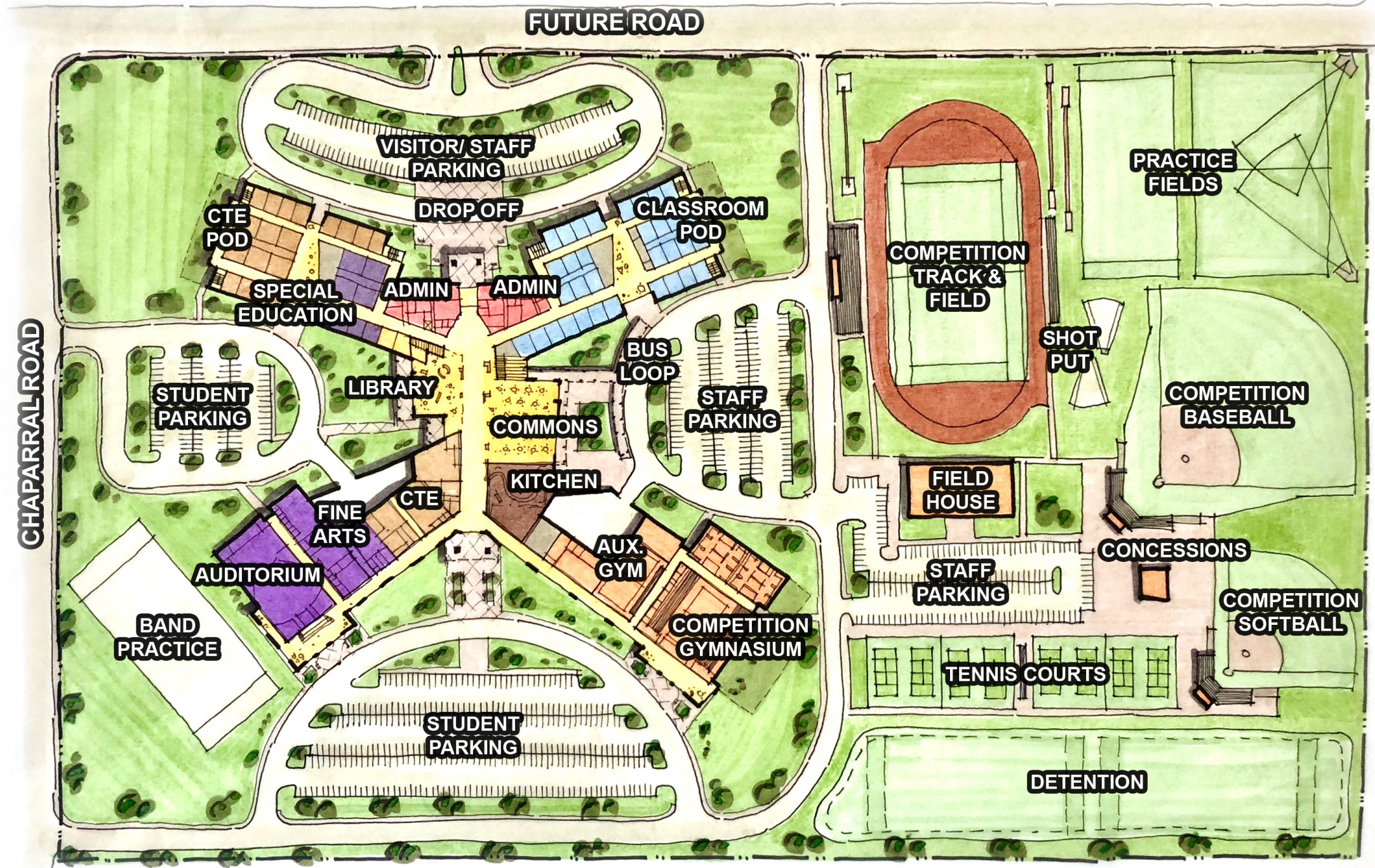
An intense period of design or planning activity. "The word charrette is French for "cart" or "chariot". In the École des Beaux-Arts in Paris in the 19th Century, it was not unusual for student architects to continue working furiously in teams at the end of the allotted term, up until a deadline, when a charrette would be wheeled among the students to pick up their scale models and other work for review while they, each working furiously to apply the finishing touches, were said to be working en charrette, in the cart." (<https://en.wikipedia.org/wiki/Charrette>).

Members of the District and staff and administrators were invited to review site and program information and guide key decisions. Throughout the process, stakeholders had the opportunity to share valuable insights, opinions, and comments

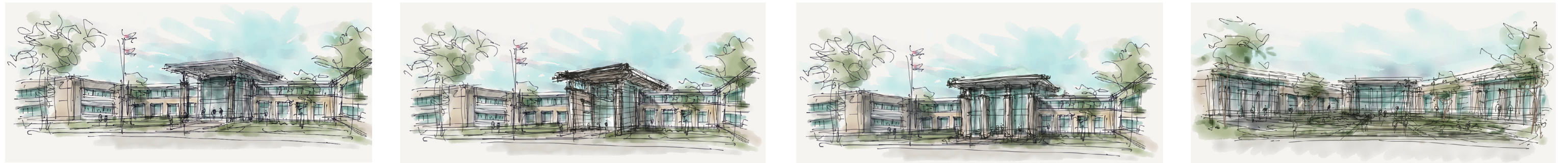
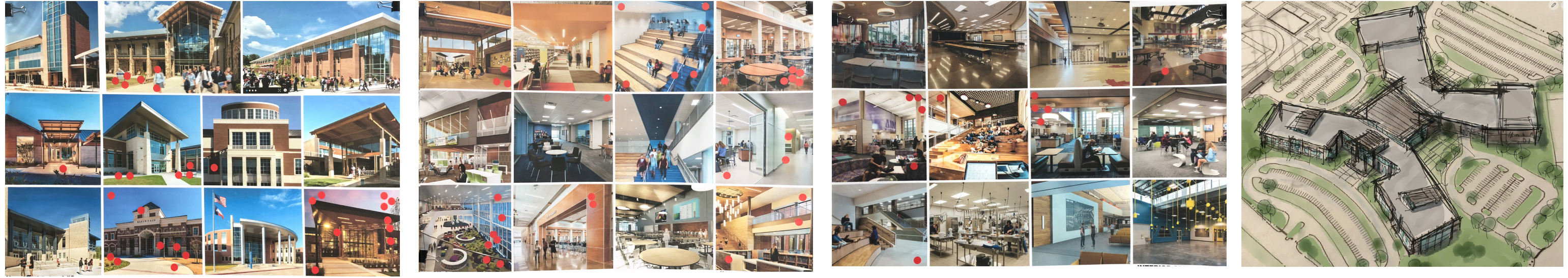
Day One

On Monday, July 23, 2018 district stakeholders came together to discuss a vision for the future of the new high school #6. The first meeting began with an overview of the charrette process and a presentation of Today's School Buildings, focused on Safety & Security, Today's Learning, and Next Gen Learning. Several High School case studies were explored and the program was reviewed.

Concept Site Plan Sketch from Design Charrette



Prompted by conceptual drawings, the stakeholders discussed 3 options for the site and building layout in depth individually and comparatively against the others. Conversations included topics such as the location of the library and commons, the connection and proximity to practice fields and transportation routes. The plan and circulation of the three options were considered for safety, ease of student circulation and organization of major programmatic elements. After thorough discussion and debate two of the options were preferred. Towards the end, the meeting focused on rough site plan and floor plan concepts including transportation routes, location of the proposed building and building organization. Stakeholders emphasized important safety concerns including traffic and pedestrian circulation. There was a major concern regarding the automobile traffic build up and bus routes during prime congestion times.



An interactive visual preference exercise was performed where participants viewed various architectural styles, including images of many interior and exterior features. There was a preference for schools with beacons that called attention to the main entrance, tall main entry vestibules, front promenades for a sense of importance and warm earth tones provided by stone and masonry that make a school warm and inviting. Keeping clean lines without unnecessary ornamentation thus providing a simple yet pleasing utilitarian building was concluded from the spirit image exercise.

Day Two

Day two of the design charrette took place Tuesday, July 24, 2018 and was a working day for PBK to develop the 2 concepts that were discussed on day one into one option that melted the positive aspects of both options into one layout. During the day, stakeholders stopped by throughout the day to observe the progress and comment as needed.

Day Three

The final day of the design charrette was held on Wednesday, July 25, 2018. PBK presented a conceptual plan for the New High School #6 including a conceptual site plan, first and second floor plans, main entry renderings, an interior commons rendering, and a three dimensional animated tour of the features of the new school. Additional discussion regarding details of the exterior building features as well as core facilities was had in order to enable the designers to move forward with the design.



Project Overview

Design Concept

Using the district's educational specifications and tailoring the program to Killeen ISD's needs, the new two story High School #6 will house a variety of programs that will provide the students a space that would promote learning within a secured building. The proposed Killeen High School #6 campus is designed to house 2,500 students in approximately 440,000 square feet and will provide students and the Killeen ISD community with a state of the art 21st Century Learning Environment.

The new building will be located east of the existing Chaparral Road. A new parent drop off drive will extend off of an extended Chaparral Road on the north side of the site. A large parking lot on the south side of the site will provide students a separate route to access the Student parking area without having to cross paths with Staff, Parents or Buses.

The concept is organized around a central commons and media center area that help to bring together the lively academic spaces and loud fine arts/athletics programs. A new welcoming front entry facing the extended Chaparral Road will lead visitors through a security vestibule into the main lobby, directly adjacent to the administration. The plan incorporates 2-story classroom wings on either side of the main entry and each with classrooms, teacher workrooms and lounge, science labs, collaboration spaces, learning stairs and small group break-out rooms.

NEW KISD HIGH SCHOOL #6 SCHOOL SITE AERIAL



At a hinge point between the classroom wings are the fundamental CTE programs on the second floor and main administration on the first floor. These spaces are centrally located to allow for easy access for the students. Centrally located in the school will be the Media center and Commons with a variety of spaces for students to sit and provide for opportunities for project based learning, technology and personal exploration within their studies. Careful attention has been placed in the location of the community spaces for afterhours use. The performing arts center lobby and competition gym entries are conveniently placed near parking and can be secured from the academic spaces for afterhours use.

21st Century Learning Environments

Flexible, adaptable school buildings encourage teaching and learning that is responsive to the needs of the user. 21st Century classrooms should be technology-rich and have flexibility in their configurations to allow for a variety of instructional methods and programs. These flexible spaces will allow for increased collaboration between students and teachers and accommodate student diversity by providing areas for collaboration, discovery, and inquiry. Small learning communities support a small school culture, where each student can be held accountable and receive the individual attention he or she needs. These environments should incorporate a collaboration area and flexible spaces to

accommodate both small and large group gatherings. The spaces should be adaptable with operable walls and moveable furniture which can be used in multiple configurations. Schools that reflect the values of the local and global community create connections with community mentors and provide real life learning experiences. Outdoor learning spaces provide an opportunity for movement, hands on learning, as well as health benefits. Studies have shown a strong association with spending time outdoors and having a healthy weight. In addition, being in nature can reduce the symptoms of ADHD and reduce the development of nearsightedness. Teachers can utilize learning opportunities such as an

outdoor courtyard to expand the boundaries of the traditional classroom.

Because classroom technology continues to evolve, it is expected that standards for the learning environment will evolve as well. All learning environments should include a robust wireless network to encourage interactive technology, but should remain flexible to provide for future technologies.

Professional learning commons should be provided to support the teacher as a professional and encourage collaboration.

Sustainable, High Performance Schools

Promotion of health and sustainability are important concepts of 21st Century Learning Environments. Sustainable, high performance environments are focused on saving energy, improving student performance, and creating future environmental stewards with a strong understanding of the impact of the built environment on the world. High performance schools can have a great impact on student health and learning. For example, a study by HershongMahoneGroup found that "controlling for all other influences....students with the most daylighting in their classrooms progressed 20% faster on math tests and 26% on reading tests in one year than those with the least." The school can be designed to incorporate learning tools into the building features. Student display spaces by the entrance can make a powerful statement about the learning mission of the school.



VIEW OF NEW MAIN ENTRY LOOKING SOUTH

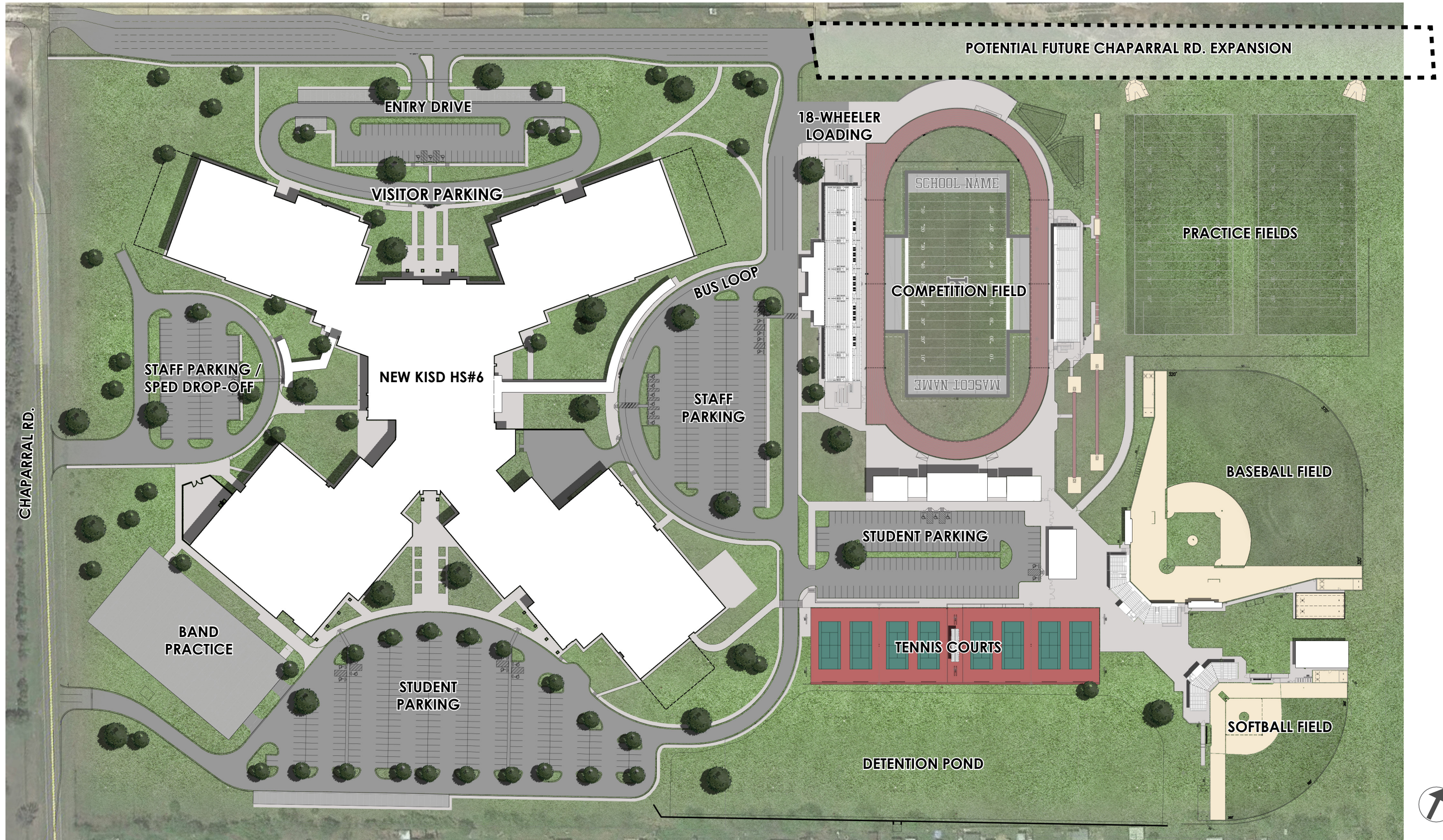


SITE & FLOOR PLANS



Design Images

OVERALL SITE PLAN LAYOUT



Design Images

OVERALL SITE PLAN LAYOUT



DESIGN IMAGES



Design Images
SITE AERIAL



SITE VIEW LOOKING SOUTH

Design Images

MAIN ENTRY NIGHT VIEW



SITE VIEW LOOKING NORTH

Design Images

MAIN ENTRY VIEW



MAIN ENTRY VIEW FROM FUTURE CHAPARRAL ROAD

Design Images

MAIN ENTRY VIEW



MAIN ENTRY VIEW

BUILDING EXTERIOR



MAIN ENTRY VIEW

BUILDING EXTERIOR



PERFORMING ARTS ENTRY

BUILDING EXTERIOR



COMMONS EXTERIOR COURTYARD

BUILDING EXTERIOR



COMMONS ENTRY VIEW FROM BUS LOOP

Design Images

BUILDING EXTERIOR



VIEW OF MAIN ENTRY AT DAWN

BUILDING EXTERIOR



SITE AERIAL VIEW

BUILDING INTERIOR



VIEW OF MAIN STREET AT SECOND FLOOR CTE AREA

Design Images

BUILDING INTERIOR



COMMONS & MAIN STREET VIEW

BUILDING INTERIOR



VIEW OF MAIN STREET AND COMMONS AREA & LIBRARY

BUILDING INTERIOR



COMMONS AREA AT LEARNING STAIR

BUILDING INTERIOR



COMMONS AREA AT LEARNING STAIR

BUILDING INTERIOR



BUILDING SECTION: COMMONS AREA / MAIN STREET

BUILDING INTERIOR



MAIN CORRIDOR AT CLASSROOM POD ENTRY

BUILDING INTERIOR



MAIN CORRIDOR AT CLASSROOM POD ENTRY

Design Images

BUILDING INTERIOR



FINE ARTS AUDITORIUM LOBBY

BUILDING INTERIOR



FINE ARTS AUDITORIUM LOBBY

BUILDING INTERIOR



AUDITORIUM

BUILDING INTERIOR



AUDITORIUM

PROGRAM & SCHEDULE



Schematic Design

PROGRAM OF SPACES

Killeen ISD High School #6				
Student Capacity: 2,500 Students				
Space / Function	Quantity	SF/Unit	Total NSF	Notes
Main Administration				
Reception	1	648	648	1 Person
Admin Storage	1	140	140	
Attendance Secretary / Waiting	1	533	533	2 secretaries
Attendance Office	1	149	149	
Public Restroom	1	60	60	Gender neutral RR for campus
Principal's Office	1	195	195	
Principal Secretary	1	121	121	
Principal Conference Room	1	219	219	
Storage Room	1	120	120	For Curriculum AP and CIS
Flex Conference Room	1	169	169	
Storage	1	199	199	
Staff Lounge	1	407	407	
Mail Room	1	291	291	
Copy Center/Work Room	1	642	642	
Paper Storage	1	171	171	
Registrar Waiting	1	374	374	
Registrar Office	1	146	146	
Cashier	1	176	176	
Cashier Storage	1	82	82	
Secretary Office	1	150	150	
Gear Up Office	1	207	207	
Gear Up Storage	1	99	99	
CIS Office	1	141	141	
Records Storage	1	203	203	
Vault	1	84	84	
Academic Support Center	1	446	446	
Student Activity Waiting / Reception	1	323	323	
Student Activity Office	1	139	139	
Student Activity Storage	1	100	100	
Conference Room	1	850	850	
Staff Restrooms	4	70	280	
AP Suite				
Waiting Area	1	202	202	
Secretary	2	132	264	
AP Offices	6	154	924	
Conference Room	1	211	211	
Counselor Suite				
Waiting Area	1	218	218	
Counselor Secretary	2	140	280	
Counselor Offices	6	156	936	
Conference Room	1	198	198	
Clinic				
Clinic	1	601	601	
Restroom	1	60	60	
Storage Room	1	113	113	
Isolation Room	1	99	99	

Space / Function	Quantity	SF/Unit	Total NSF	Notes
Police				
Police Office	1	181	181	
Police Work Room	1	159	159	
Police Processing	1	173	173	
Admin Auxiliary				
Book Room	1	844	844	
Testing Room	1	457	457	
Testing Conference Room	1	144	144	
Testing Storage	1	170	170	
Professional Learning Center	4	368	1,472	1 in each wing
Teacher Lounge	4	368	1,472	1 in each wing
Staff Restrooms	8	60	480	2 in each wing
Total Net Main Administration			17,522	
Special Education				
Skills Studios	4	783	3,132	
Skills Restrooms	2	82	164	
Kitchen	2	282	564	Shared with 2 skills studios / Kitchen
PBS Studio	1	669	669	
TLC Studio	1	831	831	
SPED Laundry Room	1	-	-	Space in Kitchen for W/D
Diagnostician Office	1	143	143	
Speech Office	1	130	130	
Sped Secretary	1	134	134	
Sped Coordinator Office	1	165	165	
ARD Conference Room	1	261	261	
Resource Room	1	791	791	1st floor pod
Resource Room	1	458	458	2nd floor central area
Sped Storage	1	115	115	wt
Restroom	1	71	71	to PBS
Total Net Special Education			7,628	
Academic Studios				
General Studios	72	776	55,872	
ISS Room	1	765	765	
Small Group Rooms	8	152	1,216	
LGI	1	889	889	
Storage	5	144	720	1 / floor / pod + central
Science Labs				
Science Lab / Studio Combo	20	1,456	29,120	Science / Studio Lab Combo
Prep Room	2	784	1,568	Shared w/ 5 Science Labs
Prep Room	2	487	974	Shared w/ 4 Science Labs
Science Lab	2	1,046	2,092	Dedicated Science Lab only
Prep Room	1	227	227	
Chemical Storage	4	117	468	



Schematic Design

PROGRAM OF SPACES

Space / Function	Quantity	SF/Unit	Total NSF	Notes
Electives / CTE				
Journalism	1	1,122	1,122	
Journalism Storage	1	177	177	
Computer Science	2	1,337	2,674	
Engineering Lab	1	1,256	1,256	
Engineering Studio	1	802	802	
Architecture and Construction Studio	1	803	803	
Criminal Justice	2	825	1,650	
Moch Court	1	626	626	
Robotics Lab	1	1,322	1,322	
Robotics Studio	1	880	880	
Robotics Storage	1	406	406	
Business Lab	2	1,176	2,352	
Business Storage	1	290	290	
Retail Shop	1	378	378	
FC&S Lab	2	1,080	2,160	
FC&S Storage	2	216	432	
Health Science Lab	2	1,230	2,460	
Health Science Storage	1	213	213	Shared between labs
Arts / AV Lab	1	913	913	
Ag Lab	1	1,211	1,211	
Ag Classroom	1	711	711	
Ag Storage	1	140	140	
JROTC				
Firing Range	1	1,572	1,572	
Classrooms	3	740	2,220	
Office	1	143	143	
Arm Storage	1	164	164	
Uniform Storage	1	244	244	
Changing Rooms	2	191	382	
Total Net Academics			121,614	
Career Tech Program				
Health Lab	1	1,501	1,501	
Health Lab Storage	1	366	366	
Dispensary	1	120	120	
Health Studios	8	814	6,512	
Dental Lab	1	1,390	1,390	
Dental Lab Storage	1	151	151	
Girls Dressing	1	223	223	
Boys Dressing	1	160	160	
Total Net Career Tech			10,423	
Media Resources (Library/Media Center)				
Media Center	1	6,095	6,095	
AV Equipment Storage	1	283	283	
Workroom	1	201	201	
Restroom	1	60	60	
Small Storage	1	45	45	
Office	2	123	246	
Large Collaboration Space	1	375	375	
Small Collaboration Space	1	181	181	
Computer Lab	3	1,026	3,078	
Total Net Media Services			10,564	

Space / Function	Quantity	SF/Unit	Total NSF	Notes
Visual Art				
Art	4	1,209	4,836	
Kiln	2	108	216	Campus prefers one big storage / kiln room
Storage Room	4	122	488	
Total Net Visual Arts			5,540	
Fine Arts				
Choir				
Choir Room	1	2,258	2,258	
Choir Ensemble	1	304	304	
Uniform Storage	1	186	186	
Riser Storage	1	271	271	
Practice Rooms	4	64	256	
Office	2	122	244	
Library	1	121	121	
Total Net Choir			3,640	
Band				
Band Hall	1	3,966	3,966	
Ensemble 1	1	318	318	
Ensemble 2	1	463	463	
Practice rooms	7	80	560	
Office	3	128	384	
Percussion Room	1	468	468	
Marching Storage	1	235	235	
Instrument Storage	1	684	684	
Instrument Repair	1	126	126	
Guard Room	1	146	146	
Uniform Storage	1	179	179	
Booster Storage	1	125	125	
Library	1	183	183	Shared with orchestra
Student Restrooms / Dressing Area	2	358	716	Shared with all fine arts
Total Net Band			8,553	
Orchestra				
Orchestra Hall	1	2,440	2,440	
Ensemble	1	463	463	
Practice Room	3	80	240	
Practice Room	1	115	115	
Office	2	134	268	
Instrument Storage	1	395	395	
Uniform Storage	1	226	226	
Total Net Orchestra			4,147	



Schematic Design

PROGRAM OF SPACES

Space / Function	Quantity	SF/Unit	Total NSF	Notes
Drama				
Black Box	1	1,675	1,675	
Drama Classroom	1	944	944	
Equipment / Control Room	1	133	133	
Office	1	131	131	
Prop Storage	1	444	444	
Green Room	1	193	193	
Laundry	1	141	141	
Total Net Drama			3,661	
Auditorium				
Auditorium Lobby	1	3,697	3,697	
Auditorium	1	12,379	12,379	1,200 Seats
Stage	1	2,241	2,241	64' X 37'
Wing 1	1	871	871	23' deep
Wing 2	1	516	516	10' deep
Set Shop	1	1,686	1,686	
Tech / Set Storage	1	487	487	
Costume Storage	1	361	361	
Cat Walk Access Stair	1	381	381	
Piano Storage	1	148	148	
Boys Dressing	1	333	333	
Girls Dressing	1	352	352	
Control Booth	1	238	238	
Storage	1	326	326	
AV Storage	1	154	154	
Box Office	1	183	183	
Men's Restrooms	1	299	299	
Women's Restrooms	1	362	362	
Staff Restrooms	2	80	160	
Ramp to Control room	1	136	136	
Total Net Auditorium			25,310	
Dance / Gymnastics / Drill				
Dance Studio	1	2,943	2,943	
Office	1	184	184	
Storage	1	302	302	
Storage	1	186	186	
Lockers	2	277	554	
Restrooms	2	56	112	
Total Net Dance			4,281	
Total Net Fine Arts			49,592	

Space / Function	Quantity	SF/Unit	Total NSF	Notes
Athletics				
Gymnasia				
Gym Lobby	1	2,660	2,660	
Competition Gym	1	14,123	14,123	1650 Seats
Auxiliary Gym	1	8,957	8,957	220 Seats
P.E./ Gym Storage	3	235	705	
Weight Room 1	1	3,485	3,485	
Weight Room 2	1	1,320	1,320	
Wrestling	1	2,310	2,310	
Large Laundry Room	1	423	423	
Small Laundry Room	1	316	316	
Storage	1	165	165	by Weight Room #2
Storage	1	184	184	
Men's Restrooms	1	477	477	
Women's Restrooms	1	492	492	
Concessions	1	262	262	
Conference	1	187	187	
Officials Changing	2	188	376	
Total Net Gymnasia			36,442	
Training				
Training Room	1	1,272	1,272	2-3 Whirlpools
Restroom	1	90	90	
Office	1	127	127	
Lockers	1	99	99	
Storage	1	205	205	
Garage Storage	1	281	281	
Total Net Training			2,074	
Boys Athletics				
Coaches Offices	1	497	497	12 workstations
Coaches Dressing	1	298	298	1 shower, 3 stalls
Swimming / Wrestling	1	224	224	36 lockers - double tier 18"x18"
Tennis / Golf	1	263	263	40 lockers - double tier 18"x18"
Track / XC	1	325	325	60 lockers - double tier 18"x18"
JV / 9th Baseball	1	498	498	72 lockers - single tier 18"x18"
Varsity Baseball	1	526	526	28 lockers - single tier 24"x24"
JV / 9th Basketball	1	463	463	72 lockers - double tier 18"x18"
Varsity Basketball	1	334	334	20 lockers - single tier 24"x24"
Soccer	1	370	370	60 lockers - double tier 18"x18"
Boys P.E.	1	283	283	240 lockers - 12"x12"
Boys Showers	1	441	441	12 showers heads
Boys Restrooms	1	377	377	3 stalls. 4 urinals
Track Storage	1	90	90	
Baseball Storage	1	105	105	
Basketball Storage	1	96	96	
Soccer Storage	1	117	117	
Golf Storage	1	90	90	
Tennis Storage	1	94	94	
Wrestling Storage	1	316	316	shared boys/girls storage
Total Net Boys Athletics			5,807	



Schematic Design

PROGRAM OF SPACES

Space / Function	Quantity	SF/Unit	Total NSF	Notes
Girls Athletics				
Coaches Offices	1	499	499	12 workstations
Coaches Dressing	1	289	289	1 shower, 3 stall
Swimming / Wrestling	1	255	255	36 lockers - double tier 18"x18"
Tennis / Golf	1	254	254	40 lockers - double tier 18"x18"
Track / XC	1	335	335	60 lockers - double tier 18"x18"
JV / 9th Softball	1	606	606	53 lockers - single tier 18"x18"
Varsity Softball	1	392	392	25 lockers - single tier 24"x24"
JV / 9th Basketball	1	333	333	72 lockers - double tier 18"x18"
Varsity Basketball	1	380	380	20 lockers - single tier 24"x24"
JV / 9th Volleyball	1	471	471	72 lockers - double tier 18"x18"
Varsity Volleyball	1	333	333	20 lockers - single tier 24"x24"
Cheerleading	1	209	209	40 lockers - double tier 18"x18"
Soccer	1	349	349	60 lockers - double tier 18"x18"
Girls P.E.	1	268	268	240 lockers - 12"x12"
Girls Showers	1	299	299	8 showers
Girls Restrooms	1	4,373	4,373	9 stalls
Track Storage	1	90	90	
Softball Storage	1	105	105	
Basketball Storage	1	89	89	
Soccer Storage	1	94	94	
Volleyball Storage	1	93	93	
Tennis Storage	1	94	94	
Golf Storage	1	90	90	
Cheerleading Storage	1	129	129	
Total Net Girls Athletics			10,429	
Field House				
AD Office	1	153	153	
Coaches Office	1	629	629	14 stations
Coaches Dressing	1	314	314	1 shower, 1 stall, 2 urinals
Meeting Room	1	994	994	
Freshman Lockers A&B Football	1	1,579	1,579	120 lockers - single tier 18"dx24"w
JV Varsity Football	1	1,327	1,327	80 lockers - single tier 18"dx24"w
Varsity Football	1	1,412	1,412	75 lockers - single tier 24"dx24"w
Large Equipment Storage	1	675	675	
Showers	2	242	484	Freshman and JV/Varsity separate
Restrooms	2	236	472	Freshman and JV/Varsity separate
Total Net Field House			8,039	
Total Net Athletics			62,791	
Food Services				
Dining Commons	1	17,575	17,575	
Kitchen / Serving	1	7,419	7,419	
Chair Storage	1	550	550	
Restrooms	2	252	504	
Total Net Food Services			26,048	

Space / Function	Quantity	SF/Unit	Total NSF	Notes
Building Support				
Large Equipment Storage	1	437	437	
Central Custodial	1	276	276	
Central Receiving	1	278	278	
Custodial Closets	10	116	1,160	
Electrical Rooms	8	118	944	
IDF Rooms	7	102	714	
Main Telecomm (MDF)	1	217	217	
Main Electrical	1	669	669	
Main Mechanical	1	1,637	1,637	square foot will vary depending on mechanical system selection
Mechanical Space	1	4,653	4,653	square foot will vary depending on mechanical system selection
Mechanical Mezzanine	1	1,500	1,500	square foot will vary depending on mechanical system selection
Student Restrooms	8	360	2,880	
Total Net Building Support			15,365	
Building Total NSF			327,087	
Circulation			93,546	28.60%
Walls			22,875	6.99%
Total Gross Square Feet (GSF)			443,508	

